

JayTech Engineering

Marine Engine and Spares, Marine Generator Set and spares, Marine Navigation and Radar, Marine Electrical, Marine Mechanical



**Registered Office:- "GAJANAN", Plot No. 66, Govind Baug, Bambhaniya Wadi – 2,
Vidhyanagar, Bhavnagar, Gujarat, 364002**



JayTech Engineering

We, JayTech Engineering, specializes in ship spares trading and Exports Since 2012. We are fully acquainted with shipboard machinery such as New and Recondition Engine Spares, Recondition Turbocharger and its Spares, Air Compressor & its spares, Hydraulic Deck Equipment like Hydraulic Pumps & Motors, Turning Gear, Centrifuge Oil Purifier , Oil Mist Detector , Heat Exchangers & Plates, Fresh Water Generator, Oily water Separator, Refrigeration Compressors, Governors, Directional Equipment's like Radar, Gyro Compass and all Navigational Equipment's. We can offer economical solution for RECONDITIONED major engine components and equipment's from our ready stock on Direct or Exchange basis, to save cost and time. And is running very efficiently under the able guidance of, Mr. Pankajbhai Barad who is specialized in Export Management and has an experience

About Us:-



- *Apart from, owing to efficient transport facility, we are capable to offer these products at our client's site in proficient way. Moreover, we work under the headship of our mentor Manager. Under his headship, we obtained a well-known position in the market*
- *Wholesaler and Exporter of Marine Engine, DG Set and Engine spares*
- *We export Marine Marine engine, Marine Outboard Engine And their Spares*
- *Brands We deal:- Yanmar, Yamaha, Deutz, Cummins, Weichai, Detroit, Caterpillar, MAN, B&W, Mercedes, Wartsilla, Volvo Penta and Niigata, etc...*
- *Being a quality conscious entity, our solitary objective is to supply the only best quality products to our client.*
- *Mr. P.B. Barad is the mentor of our company, whose experience and knowledge have enabled us to cater to the demands of customers.*
- *His leadership qualities have enabled us to attain goals of our organization*
- *Here I am providing the details and photos of the some of the engines only we have in stock...and other then this more engines and spares are available....*

NETWORK

- *Along with India, we are catering to the needs of many other countries as well. Our widespread network is inclusive of following :-*
- *Malaysia, UK*
- *Netherlands, Belgium*
- *Turkey, Italy, HongKong,*
- *Germany*
- *Greece, Taiwan*
- *Japan*
- *Russia*
- *Spain*
- *Nigeria, etc.*

List of Engines we are dealing most and have a stock

- *Deutz F10L53 Marine engine and their spares*
- *Caterpillar 3406 Engine and generator and their spares*
- *Caterpillar 3306 Engine and Generator and their spares*
- *Caterpillar 3412 Marine Engine and their spares*
- *Caterpillar 3512 Marine Engine and their spares*
- *Caterpillar 3304 Marine Engine and their spares*
- *Deutz 6 BV 6M28 Engine and their spares*
- *Cummins KTA 19 Engine and Generator and their spares*
- *Cummins QSK 19 Engine and Generator and their spares*
- *Caterpillar 3516 Engine and their spares*
- *MAN L21 Marine engine and their spares*
- *Yanmar N165 Marine engine and their spares*
- *Yanmar 8N280 Main Engine and their spares*
- *MAN 9m253 Marine engine and their spares*
- *Cummins KTA 38 Marine Engine and spares*
- *Volvo Penta D6 series Marine Engine and their spares*
- *Caterpillar 3406 Marine engine and their spares*
- *And Many more in stock.....*



Deutz SBV 6M 628 Engine and their Spares

- Brand:-Deutz
- Model No.:- SBV 6M 628
- RP M:- 900
- Kw:- 1080
- Horse Power:- 1468 Hp
- Turbo:- Water Cooled
- Governor:- Mechanical



Photos of Deutz SBV 6M 628 Engine



**FULL
ENGINE**



Engine Name Plate



**DEUTZ DIESEL
MOTOR**



Cummins KTA 19 Engine and their spares

- Brand:- Cummins
- Model No.:- KTA 19 – G4
- Usage/Application:- Ship or Industrial
- Engine Frequency:- 50
- Kw:- 1000Kw
- No. of cylinder:- Multi Cylinder
- Engine Rpm :- 1800
- Mfg:- 2002 Cummins India Pvt. Ltd.



Photos of Cummins KTA 19 Engine



← Full Engine →



NAME PLATE



MAK 9M453 Marine Engine and their Spares

- *Brand:- Make 9M453*
- *Material:- Mild Steel, Cast Iron*
- *No Of Cylinder:- 9*
- *Engine Kw:- 2700*
- *Engine Rpm:- 600*
- *Year Of Mfg:- 1982*
- *MaK 9M453*



More Details about MAK 9m453 Engine

- Feature:- High Efficiency
- Dimensions (L*W*H):- 271"84"132" Inch (in)
- Weight (in Kg):- 30000 Kg
- We can also additionally supply spare parts for MaK M453 such as Cylinder heads, piston, connecting rods, fuel pumps, Crankshaft, cylinder block , etc...



Caterpillar Types 3516 Gas Generator

- Brand:- Caterpillar
- Fuel Type:-Natural Gas, Biogas, Coal Gas
- Engine Model:-G3516A
- Displacement:- 69.0 l
- Rpm :- 1200 / 1500 rpm
- Stroke :-190.0 mm
- Maximum Electrical Efficiency :- 36.50%
- Maximum Standby Rating:- 1000 kW
- Frequency :- 50 / 60 Hz
- Bore:-170.0 mm



MAN D2842 LE301 Engine and their Spares

- Brand: MAN
- Model:- D2842 LE301
- Mfg:- 2008
- Kw:- 620
- Speed:- 800 Rpm
- Frequency:- 60Hz
- KVA:- 737



Photos Of the MAN D2842 LE301 Engine



Generator Name Plate



Engine Name Plate



Caterpillar 3606DI Engine and their spares

- Brand:- Caterpillar
- Model No.:- 3606DI
- Fuel:- Diesel
- RPM:- 720
- KW:- 1300
- Hp:- 1743 Hp
- Made in Switzerland
- Complete with Caterpillar Governor, part no. 4P6592, Twin Inlet Turbo and STD. Crank Shaft.



Photos of Caterpillar 3606DI Engine



Full Engine



ENGINE MODEL	3606 DI
SERIAL NUMBER	8RB00335
CATERPILLAR CAT	
ARRANGEMENT NUMBER	9Y8422 / 9Z5709
<small>(ALWAYS GIVE ALL NUMBERS)</small>	

Engine Name Plate



Turbocharger

Caterpillar D398 Engine and their spares

- *Brand:- Caterpillar*
- *Model No.:- D398*
- *Hp:- 820 Hp*
- *RPM:- 1200*
- *Fuel Type:- Diesel*
- *Stroke:- 4 Stroke*
- *Condition:- Used*



Photos of Caterpillar D398 Engine



FULL
ENGINE



Hours Run



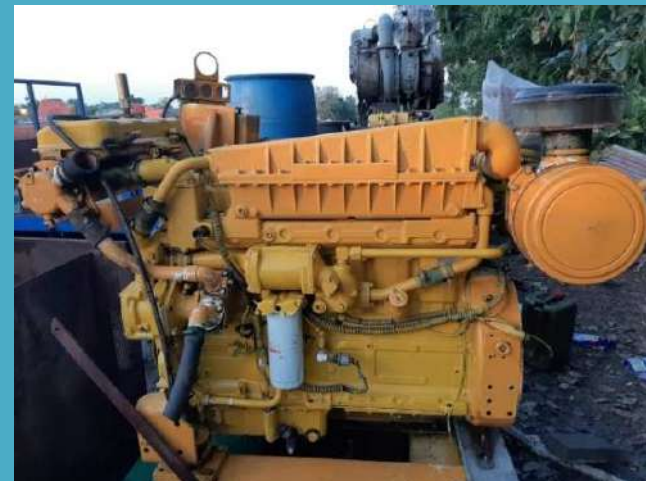
V-12 CATERPILLAR 3512 DIESEL ENGINE AND THEIR SPARES

- Brand:- Caterpillar
- Model:- 3512
- Stroke:- 190 mm (7.5 in)
- Speed:- 1200-1800 rpm
- Compression Ratio:- 13.01
- Displacement:- 51.8 L (3161 in³)
- Bore:- 170 mm (6.7 in)
- Minimum Power:- 761.0 kW



Caterpillar 3306 Engine and their Spares

- Brand:-Caterpillar
- Model no. :- 3306
- Horse Power:- 300Hp
- RPM:- 2300 rpm
- Multi Cylinder Engine
- Power Source:- Diesel
- Stroke:- 4
- Engine Block:- Cast Iron
- Weight:- 2265 lbs(dry)



Photos of Caterpillar 3306 Engine



← Full
Engine →



YANMAR 6N18 ENGINE AND PARTS

- *Available Engine And Parts*
- *[Diesel Generators](#), Second Hand & Used & New / Recondition Spare parts,*
- *Crankshaft , Cylinder head , Piston Pin*
- *Piston Ring , Connecting Rod*
- *Cylinder Liner , Engine Bearings*
- *Engine Valves , Valve Seats , Valve Cages*
- *Guides , Springs , Valve Rotators Fuel injection Systems Parts ,*
- *Cylinder Head Gasket Sets , Cylinder Block ,*
- *Cylinder Cover , Camshaft , Piston*



DAIHATSU 6DK 20 USED MARINE GENERATOR

- Make:- DAIHATSU
- Type:- 6DK20
- RPM:- 900
- POWER:- 1100 PS
- KVA:- 1500
- CYCLES:- 50Hz
- Kw:- 900Kw
- [The marine generator](#) is a running takeout from ship. Excellent working condition and ready to dispatch Interested buyers do contact us for more details



600 Kva Cummins VTA28-G3 Generator

- The details of available genset is as below:-
- Make : Cummins
- Type : VTA 28 G3
- RPM : 1500
- Frequency : 50 Hz
- Output : 3 phase
- Alternator : Stamford
- Voltage : 380 / 220V
- Condition : Used
- The complete Cummins 600 KVA generator is in excellent working condition.
Contact us for price and other details



625 Kva Wartsilla 12V UD 25s Generator

- Used Wartsila Complete generator for sale. Details of the available genset as below:-
- Make : Wartsila
- Type : 12V UD 25S
- RPM : 1200
- Kw: 594
- KVA : 625
- Cooling : Water Cooled
- Cylinder Type : 12V
- Cycle : 60Hz
- Volt : 450
- Condition : Used and running takeout from ship
The available Wartsila generator 12V UD 25S of 625 KVA is in working condition. Subjected to being unsold.



Used Marine Diesel Engine MAK 6M 452 AK

- Used Marine Engine
- Make:- MAK
- Type:- 6M452 AK
- FABRIK NO.:- 25124
- PS:- 1500
- RPM:- 450



PHOTOS OF MAK 6M 452 AK Used Marine Diesel Engine



Daihatsu 6DLM 32L Used Marine Generator

- We source and supply used Daihatsu Marine Engines from ship breaking yards in India. Presently available in stock Daihatsu 6DLM32L marine generator is very good condition with low running hours. The details of the available genset is as following:-

- Make : Daihatsu
- Type / Model : 6DLM32L
- RPM: 580
- Rating : 2000 PS
- Cylinders : 6
- Crankshaft : Standard Size



- The low running hours generator available in stock and subjected to unsold.

Contact us for prices and any other details required .

The marine generator is ready to dispatch from our yard. Offer is subjected to being unsold. Interested clients do contact us for price and other required details.

The generator was removed from ship in its running condition.

- Inspection is available for interested buyer.

HFO/IFO using Generators

DAIHATSU 6DLB/20

- *Used Generator for Sale*
Complete generator and is a running take put from ship

Details as below:-

- *DAIHATSU DIESEL ENGINE*
- *TYPE :6DLB-20*
- *RPM : 720*
- *ALTERNATOR : TAIYO*
- *OUTPUT: 500 KVA*
- *RPM:720*
- *Condition : Used and in working condition*



Cummins KTA 1150 Marine Propulsion Engine and Generator

- *Details as below:-*
- *Condition:- Used Second Hand and in excellent running Condition*
- *HP:- 500*
- *RPM:- 1800*
- *KW:- 350*
- *Subject to being unsold*
- *We also provide other models of Cummins Marine Diesel Engines and Generators. Contact us you're your requirement of any Cummins engine or its used reconditioned spare parts.*



MAK M25 Engine Parts – Nozzle, Valve Guide

- *MAK M25 Engine Parts:-*
- *PLUNGER WITH BARREL*
- *NOZZLE*
- *VALVE GUIDE*
- *VALVE SEAT*



MAK M25 Engine Nozzle

Available Unused / OEM / Reconditioned Nozzles

OUR EXCELLENT SERVICES:

We are suppliers of unused / used / reconditioned / OEM/ Aftermarket spare parts for all types of MAK Marine Engines.

We maintain regular stocks of these spare parts and dispatch is on immediate basis.

- Nozzle
- Piston
- Plunger with Barrel
- Valve Seat
- Valve Guide



MAK M25 Engine Cylinder Head and Other Major Parts

- ***AVAILABLE IN STOCK MAJOR USED SPARES FOR MAK M25 ENGINE***
- ***CYLINDER HEAD***
- ***FUEL PIPE***
- ***GOVERNOR***
- ***TURBOCHARGER***
- ***FUEL INJECTION PUMP***
- ***CONNECTING RODS***



CAT 3412 MARINE ENGINE AND SPARES

- *Complete Reconditioned 3412 Marine Diesel Engine, Marine Gensets, and Marine Propulsion Engine*
- *Fully refurbished and can be directly installed*
- *Below is the list of available spare part for CAT 3412 marine engine*

1. Cylinder Head

2. Connecting Rods

3. Fuel Injection Pump

4. Nozzle / injectors

5. Turbocharger

6. Engine Block

7. Pistons

8. Piston Rings

9. Fuel Pump

10. Water Pump



12V MTU Marine Engine and their spares

- Number Of Cylinder :- 12
- Rated Speed:- 2450 RPM
- Engine Model:- 12V 2000 M96L
- Rated Power ICFN:- 1432 (1920) kW (bhp)
- Bore/Stroke :- 135/156 (5.3/6.1) mm (in)
- Displacement :- 26.8 (1635) l (cu in)
- Flywheel Housing:- SAE 1/SAE 0



CAT 3512 Used Engine and Generators

- Caterpillar 3512 Marine Engines and Marine Generators are available in stock and are for sale. These marine engines are sourced from ship recycling yards in India. Details of the available CAT 3512 is as below:-

- MAKE:- CATERPILLAR
- TYPE:- 3512
- RPM:- 1500
- GENERATOR FREQUENCY:- 60HZ
- ENGINE HP:- 1280
- KW:- 900



Caterpillar 3512 DITA Complete Diesel Generator

- *MAKE:- CATERPILLAR*
 - *TYPE:- 3512 DITA*
 - *KVA:- 1337*
 - *RPM:- 1800*
 - *HZ:- 60*
 - *CONDITION:- USED AND IN WORKING CONDITION*
 - *REMOVED FROM SHIP*
- In very excellent condition. Removed from ship at ship recycling yard in India. Currently one complete generator is available. Required accessories are also available on demand. Offer is subjected to unsold. Complete work load testing is already done and is ready to dispatch. Other makes and model used marine diesel engine spare parts are also available with us. We maintain inventory of spare parts for almost all makes marine diesel engines available on board ships.*



Caterpillar 3408 Engine and their spares

- Brand:- Caterpillar
- Model no.:- 3408
- No. of cylinder:- 8
- Horse Power:- 420
- Displacement:- 18.0 ltrs
- Weight:- approx 3705 lbs
- RPM:- 2000
- Kw:- 430
- Condition :- Used



DEUTZ 628 ENGINE PARTS

- *SPARE PARTS AVAILABLE FOR DEUTZ 628 MARINE ENGINE*
- *Below is the list of available major spare parts reconditioned and used / unshed for sale.*
- *FUEL PUMP*
- *NOZZLES*
- *PISTON*
- *CONNECTING ROD*
- *PLUNGER*
- *CYLINDER HEAD*
- *PISTON RINGS*
- *EXHAUST VALVE*
- *INLET VALVE*



MAN B&W S50MC SPARE PARTS

- *Available in stock and for sale:-*
- *Scraper Rings*
- *Liner*
- *Piston*
- *Connecting Rod*
- *Fuel Pump*
- *Piston Crown*
- *Plunger*
- *Cylinder Head*
- *Governor*
- *Turbocharger*

USED / RECONDITIONED SPARE PARTS FOR

MAN B&W STX
S50MC



MITSUBISHI S6R MPTK ENGINE AND SPARES

- *Mitsubishi Marine Engine/ Marine Generator for Sale. Only engine is available without gearbox. The engine is in excellent working condition. The details of the engine is as below :-*
- *Make : Mitsubishi*
- *Type : S6R MPTK*
- *Condition : Used, running
Take nout from ship*
- *RPM : 1800*
- *Output : 635 Kw*
- *Cycles : 60 Hz*



MAN 6L20/27 MARINE GENERATOR AND SPARES



- Available used reconditioned spare parts for MAN Motor and also complete engines / generators.

- The available complete generator / engines details as below:-
Make : MAN B&W Diesel

- Type : 6L20/27
- Power : 540 Kw
- RPM : 900

- KVA : 625
- Frequency : 60 Hz

- Condition : Used and in working condition



MAN B&W 6L20/27

COMPLETE ENGINE / GENERATOR AND
USED SPARE PARTS

Further, also available in stock following major spares



Connecting Rods

- *Con Rod Bearing*
- *Camshaft Assy*
- *Piston Rings*
- *Piston*
- *Crankshaft*
- *Cylinder Liner*
- *Sleeve*
- *Exhaust Valve*
- *Valve Guide*
- *Oil Scrapping Rings*
- *O-Rings*



- *Send us all your requirement for complete engine as well as spare parts for MAN B&W 6L20/27 and 7L20/27 Marine Engine.*

Yanmar S185L-UT Diesel Engine

- Brand:- Yanmar
- Model No.:- S1851
- Stroke:- 4Stroke
- Power Source:- Diesel
- Rated Speed:- 900RPM
- GENERATOR MODEL: FE41A-8
- KVA: 400
- Cylinder:- Multi Cylinder
- VOLTS: 450
- DATE: 1982
- HZ: 60



Stork 6SW240 Marine Engine and Spares

- Engine Type:- Heavy Engine
- Brand:- Stork 6SW240
- Model No.:- 6SW240
- Usage/Application:- Ship Engine
- Rated Speed:- 900
- Power Source:- Diesel
- Material:- Cast Iron



Engine Name Plate

Bergen KVMB 12 Marine Engine and their spares

- Brand:- Bergen KVMB 12
- Material:- Mild Steel
- Make - Type : BERGEN DIESEL TYPE NORMO - KVMB-12
- Engine Kw:- 1940
- Engine Rpm:- 850
- BHP:- 2640
- Year Of Mfg:-1981
- Base Materials:-Good Technical Condition
- Status: In Stock



Contact Details

- **Jay Tech Engineering**

(Exporter of Marine Engine, Generator and spares)

Bhavnagar - 364002, Gujarat, India

Contact Person: Pankaj B. Barad

- Mobile:- +91-7016007424 / +91 7046138596
- Website:- www.jaytechengineering.blogspot.com

